

3 Bedroom End Terraced for Sale - Offers in Region of £89,950

Leamington Street, Rochdale, Lancashire, OL12 0PT

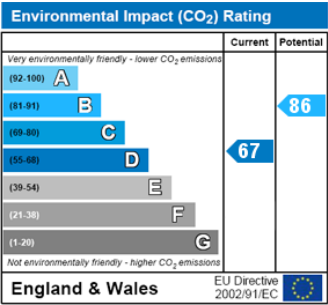
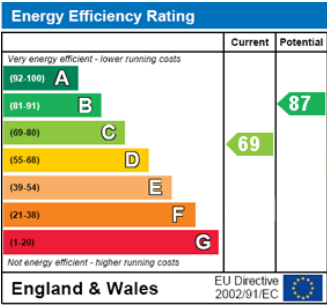


KEY FEATURES:

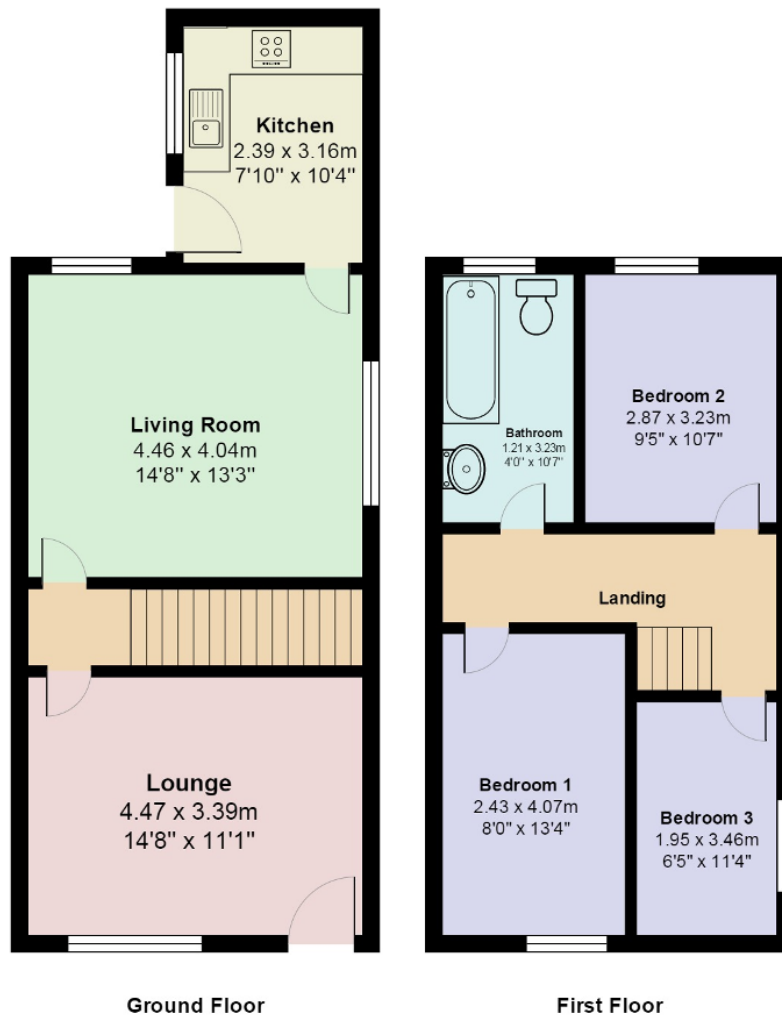
- NEWLY REFURBISHED • 3 BEDROOMS • 2 RECEPTION ROOMS • NEW KITCHEN AND BATHROOM • READY TO MOVE INTO

Description

Oakleaf Estates are pleased to bring to the market a fully refurbished 3 bedroom 2 reception property close to Rochdale Town Centre. Briefly comprising 2 reception rooms and a fully fitted kitchen to the ground floor and 3 bedrooms and a bathroom to the first. The house has gone through a full renovation and recent upgrades include Upvc double glazing, full re-plastering, new kitchen and bathroom. The property isdeceptively spacious and viewings essential to appreciate size and quality of accomodation available.



35 Leamington Street, Rochdale, OL12 0PT



Total Area: 82.6 m² ... 889 ft²

All measurements are approximate and for display purposes only