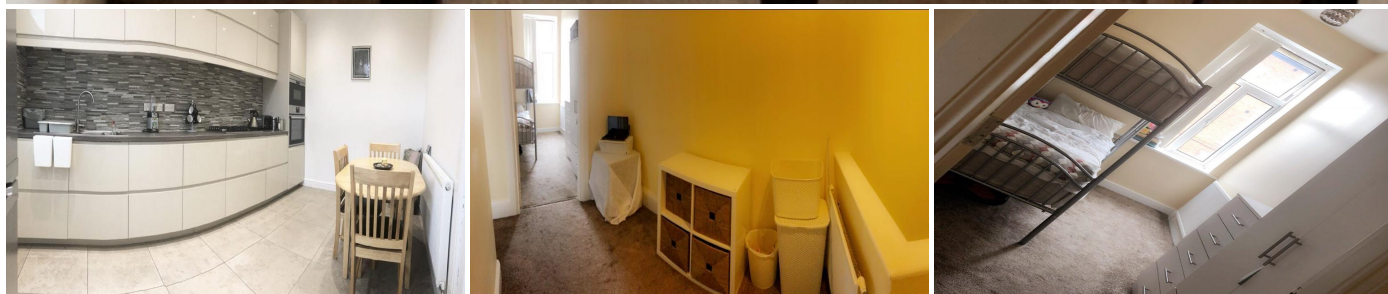


3 Bedroom Semi Terraced for Sale - £140,000

East Street, Rochdale, Lancashire, OL16 2EG



KEY FEATURES:

- SUPERB 3 BEDROOM MID TERRACED PROPERTY • 2 RECEPTION ROOMS • FULLY MODERNISED •
- RECENTLY INSTALLED KITCHEN • GAS CENTRAL HEATING • UPVC DOUBLE GLAZED • VIEWING STRICTLY BY APPOINTMENT

Description

Oakleaf Estates are pleased to bring to the market a superbly refurbished and modernised 3 bedroom mid terraced property in the popular area of Wardleworth. Briefly comprising entrance hallway, leading to a large modern dining room, a fully fitted and recently installed kitchen, a further reception room and a downstairs shower room. To The first floor there are three double bedrooms and a modern bathroom. The property further benefits from Upvc double glazing and gas central heating. We strongly recommend a viewing on this property as properties of this quality seldom come available on the market

